

Riverplus Fund

MONTHLY INVESTMENT REPORT September 2010

SHARE PRICE (September 30): 102.02
NAV (September 30): CHF 56'889'408

Riverplus Fund is a long-short Delta, Gamma, and Vega fund incorporated in the Cayman Islands. The inception date was **October 1st, 2009**. The fund's objective is to generate a stable source of return by actively trading in listed Swiss stocks, options on Swiss stocks, and Index Futures. Investment advisor of Riverplus Fund is lambda Capital Group.

Monthly Net Returns

Year	Jan	Feb	Mar	Apr	May	Jun	Jul	Aug	Sep	Oct	Nov	Dec	YTD
2009										0.02%	-0.31%	0.38%	0.09%
2010	0.67%	0.23%	2.02%	-0.72%	-0.98%	-0.26%	0.94%	-0.25%	0.29%				1.93%

Key Ratios*

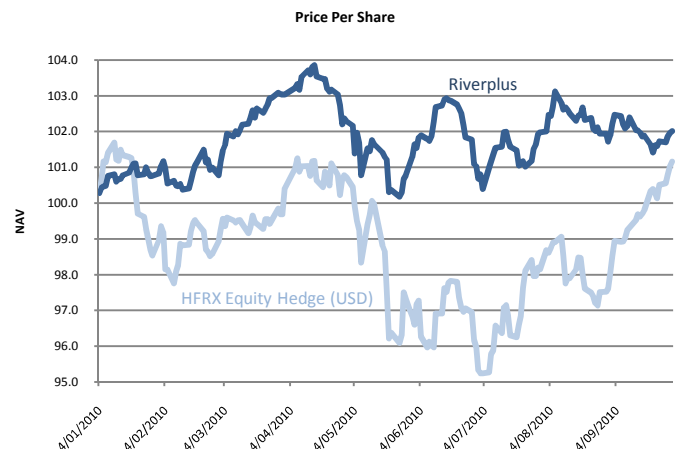
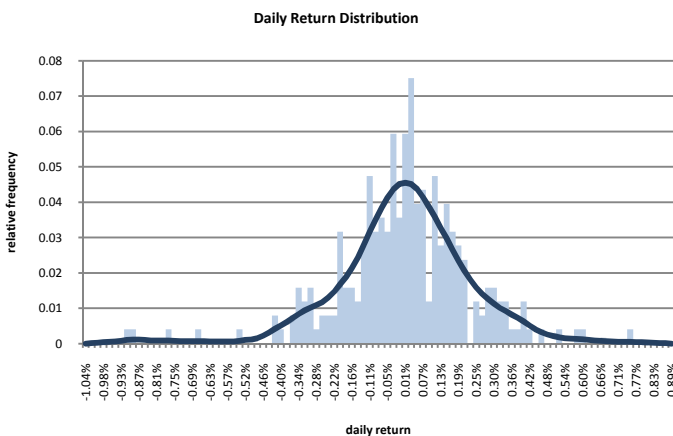
Since Inception (Oct 1st, 2009):

September 2010:

Annualized Volatility	3.45%	2.79%
Sharpe Ratio (bias corrected) ¹	0.57 (0.57)	1.09 (1.09)
Up vs Down Days	55%	50%
Shortfall Probability	45%	50%
Sortino Ratio	0.79	1.61
Omega Ratio	1.11	1.19
Upside Potential Ratio	8.27	10.19
Top Performers	FIA, OERL, CLN	
Top Losers	SYST, SMI, NESN	

*To calculate the Sharpe Ratio and other key ratios we use the average 1 month CHF Libor rate over the respective time horizon as proxy for the risk-free rate. All numbers are based on daily NAV calculations and we annualize by assuming 253 trading days. The Shortfall Probability measures the probability of the fund return to be smaller than the risk-free rate. The Sortino, Omega, and Upside Potential ratios are investment ratios based on lower partial moments. The Sortino ratio is an adjusted Sharpe ratio for which the volatility generated by negative returns (semi-volatility) is taken into account. The Omega Ratio is a probability weighted ratio of gains to losses relative to the risk-free rate. The Upside Potential Ratio is calculated as the ratio between the expected upside and semi-volatility.²

Evolution of NAV and Distribution of Daily Returns³



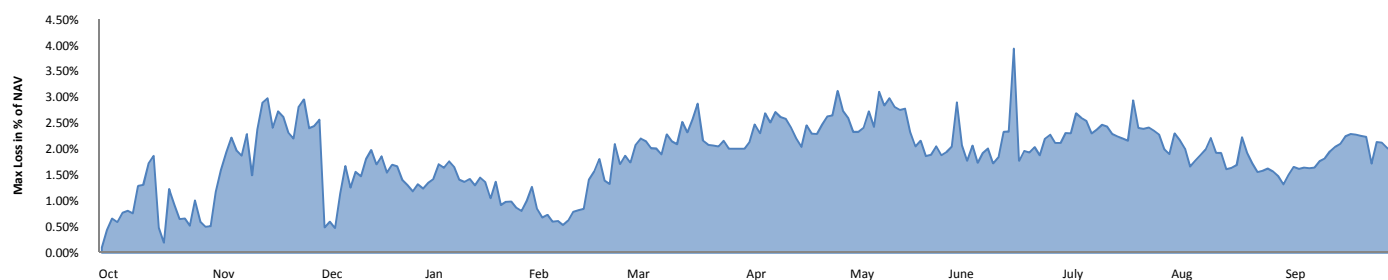
¹ Our bias-corrected Sharpe Ratio is based on an annualization correction and a Newey-West adjustment for the standard deviation of returns that takes into account serial correlation and heteroscedasticity, both of which can lead to potential biases in the traditional Sharpe Ratio calculation. See, Lo, Getmansky, and Makarov (2004), "An Econometric Model of Serial Correlation and Illiquidity in Hedge-Fund Returns," *Journal of Financial Economics*, 74, 529–609.

² For more details on the above performance measures, we refer the interested reader to the papers of Sortino, van der Meer, Plantinga (1999), "The Dutch Triangle," *Journal of Portfolio Management*, 25, 50-57; Keating and Shadwick (2002), "A Universal Performance Measure," *Journal of Performance Measurement*, 6, 59-84; Kaplan and Knowles, "Kappa: A Generalized Downside Risk-Adjusted Performance Measure," *Journal of Portfolio Management*, 8, 24-54.

³ For the daily return distribution, we plot the histogram together with a non-parametric density estimator based on Gaussian kernels.

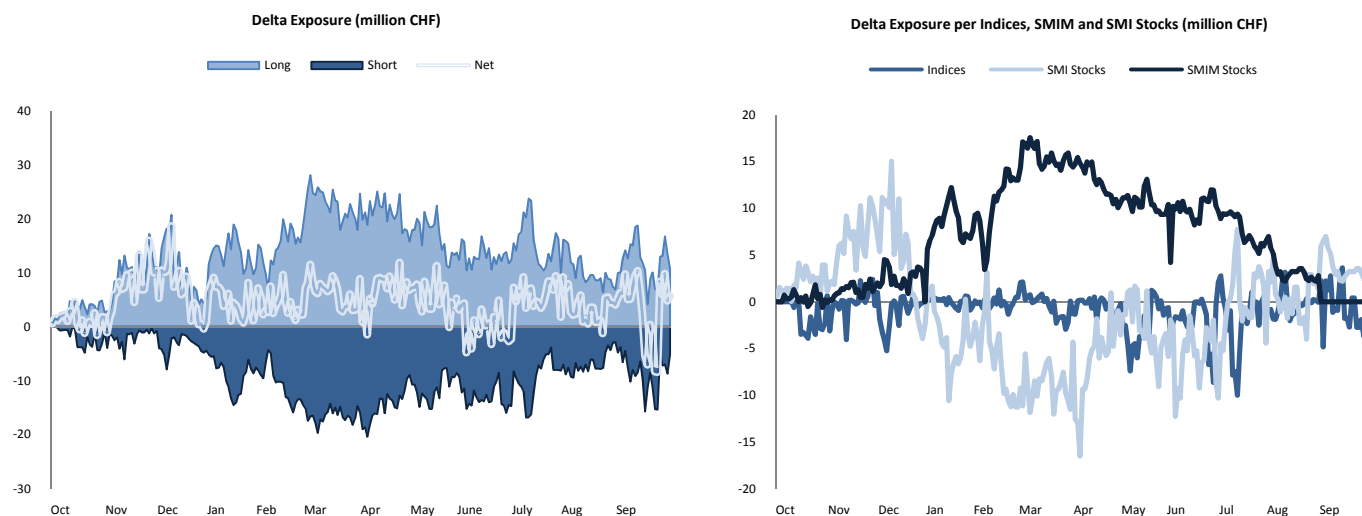
Risk Exposure

Our risk allocation for the different strategies within Riverplus is based on the maximum loss principle. In contrast to the commonly used Value-at-Risk, Maximum Loss is a coherent risk measure.⁴ As an overall acceptable risk exposure on the fund level, we fix a monthly maximum loss of 5% at the 95% confidence bound.



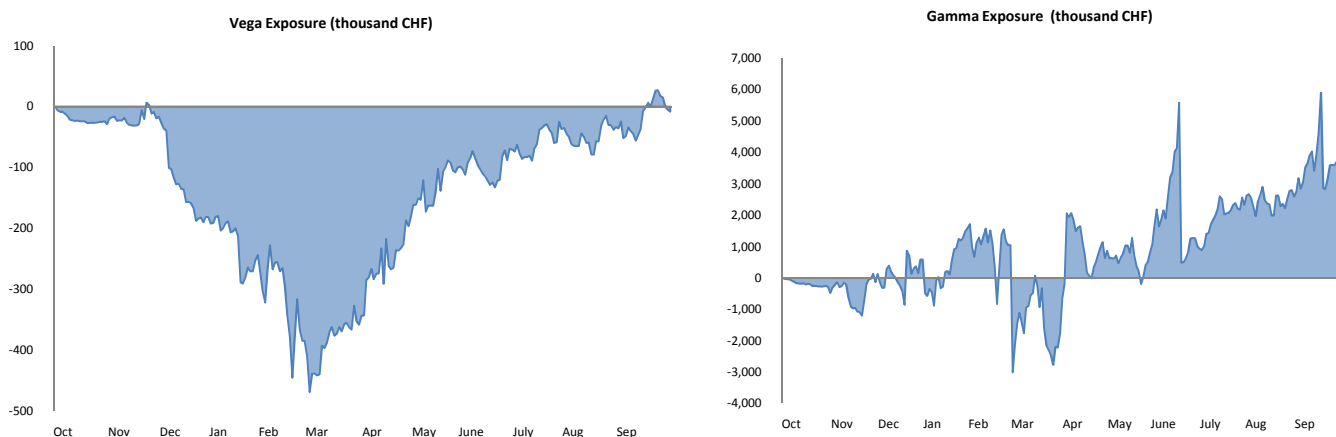
Delta Exposure

The figures below show our Delta exposures. On the right, we plot our long and short Delta positions as well as the resulting net Delta position, expressed in millions of CHF. The left figure illustrates the Delta exposures for our index positions and for the positions in SMI and SMIM stocks.



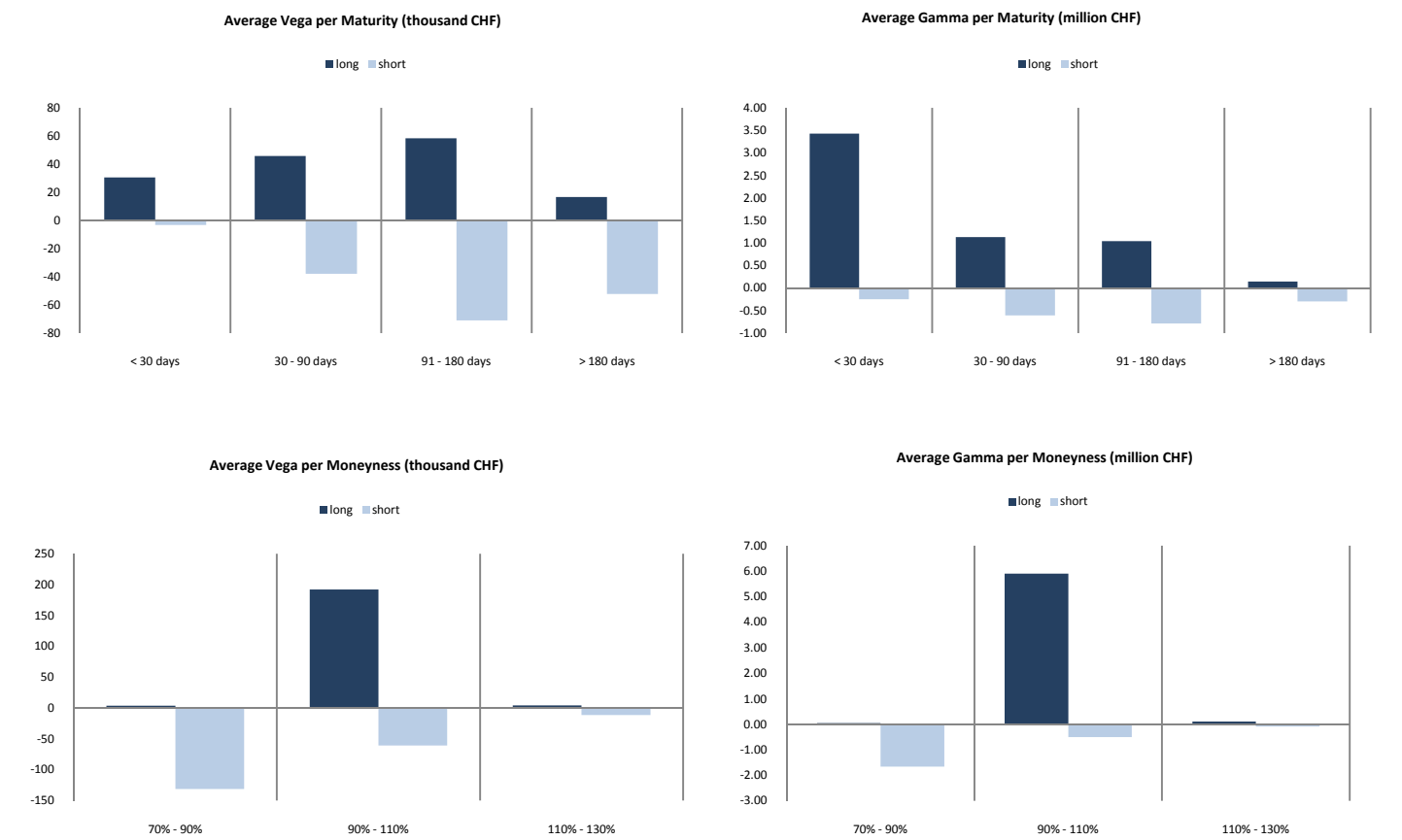
Gamma and Vega Exposure

A large part of the risk capital is allocated to active option-based strategies. Therefore, Gamma and Vega exposures play a prominent role in our risk management and need to be monitored carefully. The figures below plot the daily net Gamma and Vega exposures since inception.



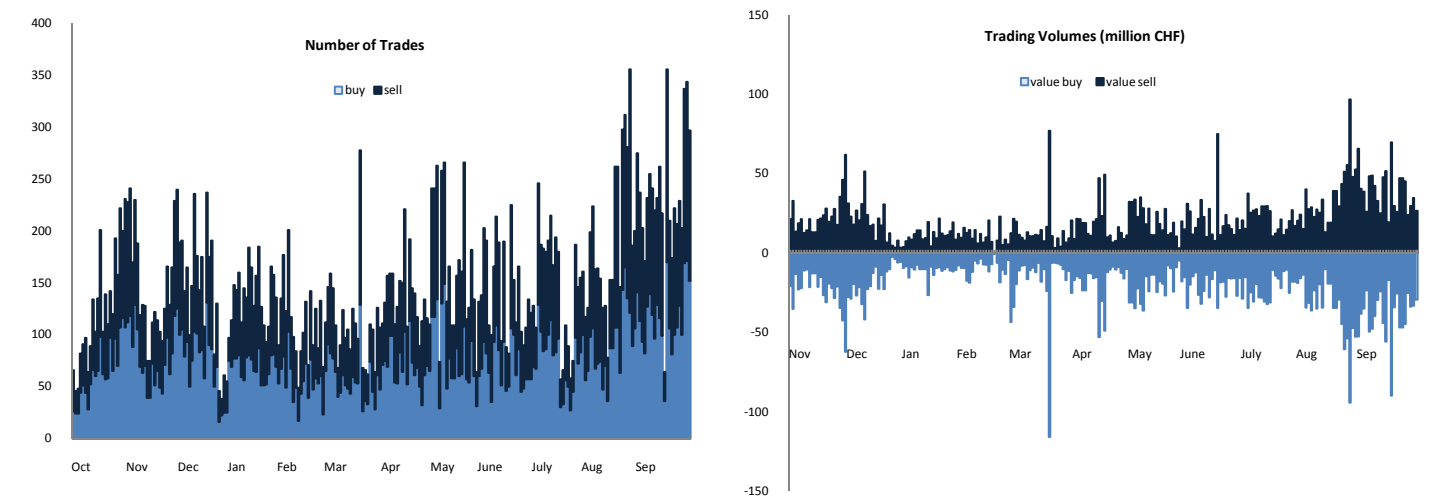
⁴ See, Artzner, Delbaen, Eber, Heath (1999), "Coherent Measures of Risk," *Mathematical Finance*, 9, 203-228.

To provide more information about the nature of our Vega and Gamma exposures, we plot the maturity and moneyness buckets for the average daily Gamma and Vega positions in the figures below, split up into long and short positions.



Daily Trading Activity

Riverplus is committed to a highly active trading strategy. Below we report the number of trades made for each trading day since inception and the daily values of the buy and sell trades (in millions of CHF).



Additional Information			
Strategy	Long-Short Delta Gamma Vega	Assets under Management (September 30, 2010)	57 million
NAV per Unit	102.02	Redemption	monthly/30 days notice
Management Fee	2%	Performance Fee	20%
Fund Structure	single fund, open-end	Prime Broker/Custodian	Credit Suisse
Legal Advisor to the Fund	Maples and Calder	Administrator	BNY Mellon Alternative Investment Services*
Equalisation	yes	High-Water-Mark	yes (103.03 as of September 30, 2010)
Investment Advisor	lambda Capital Group	Investment Manager	Riverplus Management Company
Domicile	Cayman Islands	Auditor	KPMG
Stock Exchange Listing	Irish Stock Exchange	Valor/ISIN	10263523/KYG759421053
Day of Inception	October 1 st , 2009	Share Class	CHF

* Please note that effective July 1st, 2010, PNC Global Investment Servicing has been acquired by The Bank of New York Mellon Corporation. PNC Global Investment Servicing (Europe) has changed its name to BNY Mellon Investment Servicing (International) Limited. Other than the name change, there were no other changes made.

For further details or for more information, please contact us at contact@lambdacapital.ch or visit www.lambdacapital.ch

Disclaimer: Past performance is not necessarily indicative to future performance. The information contained in this letter represents neither an offer to sell nor a solicitation of an offer to buy any securities. Securities in this fund will only be offered through a current offering memorandum and appropriate subscription documents. The material provided herein is for informational purposes only. Investments in Alternative Investment Strategies are suitable only for sophisticated and qualified investors who fully understand and are willing to assume the risks involved. Alternative Investments by their nature involve a substantial degree of risk and performance may be volatile.